



com cam

Share your digital media on your phone using your analogue TV with Com-Cam.

Developed by:

The Digital World Research Centre, University of Surrey, UK

<http://www.dwrc.surrey.ac.uk/com-cam.shtml>

the Automatic Research Group, University College Falmouth, UK

<http://air.falmouth.ac.uk/research-groups/automatic>

CC-BY Attribution 3 License

This license lets you distribute, remix, tweak, and build upon our work, even commercially, as long as you credit us for the original creation. <http://creativecommons.org/licenses/by/3.0/legalcode>

box template: corrugated cardboard
2mm thick | sheet size: 75 x 75cm

cut on solid lines, score and fold on dashed lines

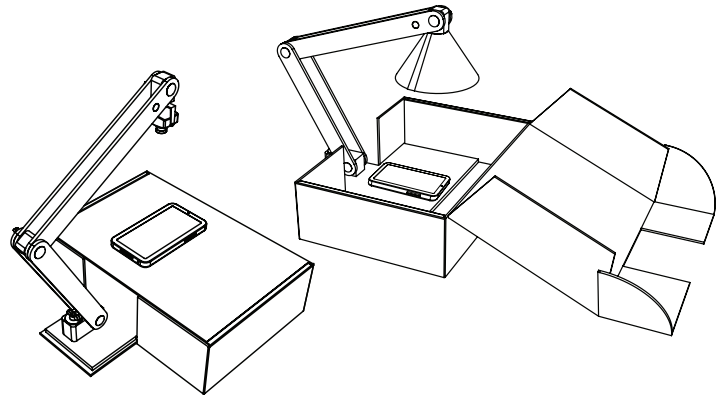
wooden base plate (6mm)

camera shade (optional) 0.5-1mm polyprop

tools needed



6mm
15mm



electrical components (4)



mini CCTV camera



camera power supply
input: 100-240v
50/60Hz output: 9v 1A



RCA to mini jack,
phone to TV sound cable

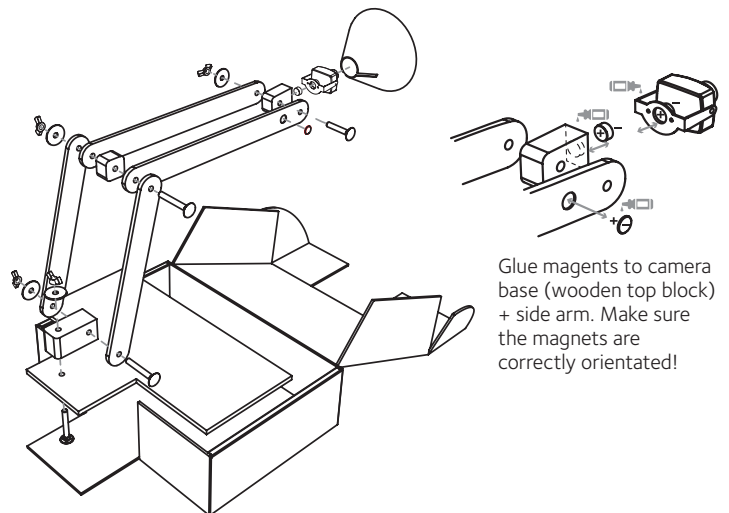


RCA to RCA,
camera to TV cable



or RCA to SCART,
camera to TV cable

construction diagram



Glue magnets to camera base (wooden top block) + side arm. Make sure the magnets are correctly orientated!

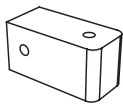
Camera + Power Supply (UK) <http://tiny.cc/gg24tw>

<http://tiny.cc/9i24tw> (LEDS require removal)

Camera + Power Supply (South Africa) <http://tiny.cc/8j24tw>

Camera + Power Supply (Worldwide bulk orders) <http://tiny.cc/rk24tw>

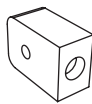
construction components (18)



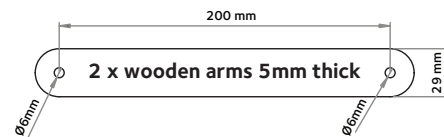
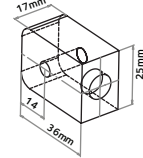
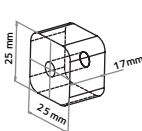
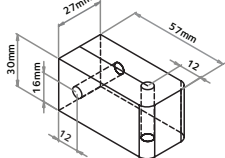
1 x wooden
base block



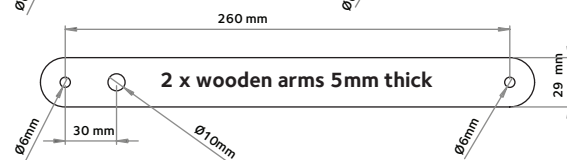
1 x wooden
middle block



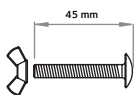
1 x wooden
top block



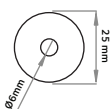
2 x wooden arms 5mm thick



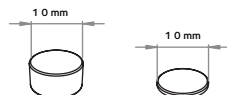
2 x wooden arms 5mm thick



4 x M6 coachbolts



4 x 'penny' washers



2 x 5mm magnets
(neodymium)
1 x 1mm magnet
(neodymium)

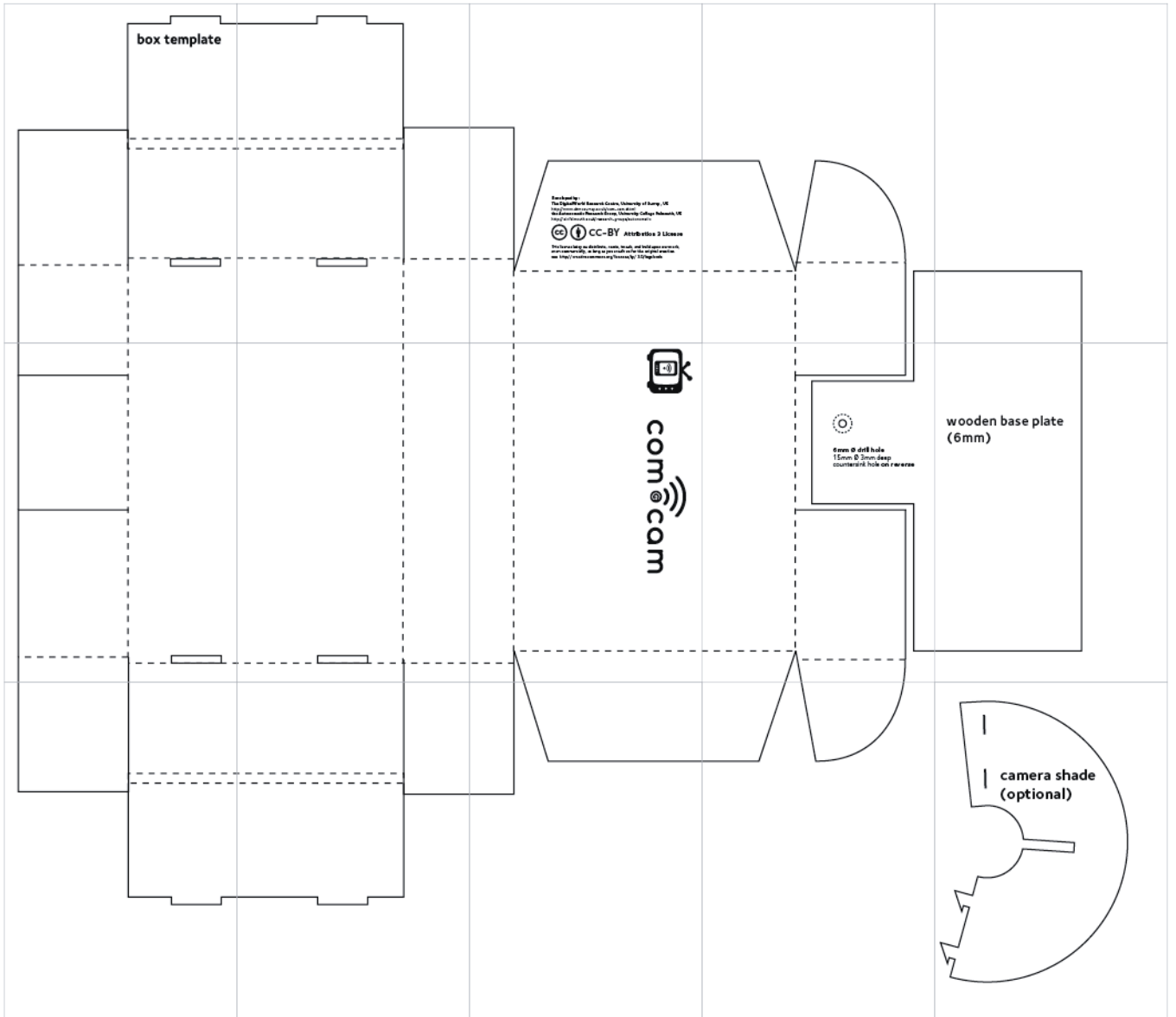
For more information and updates:

www.digitaleconomytoolkit.org | www.dwrc.surrey.ac.uk/com-cam

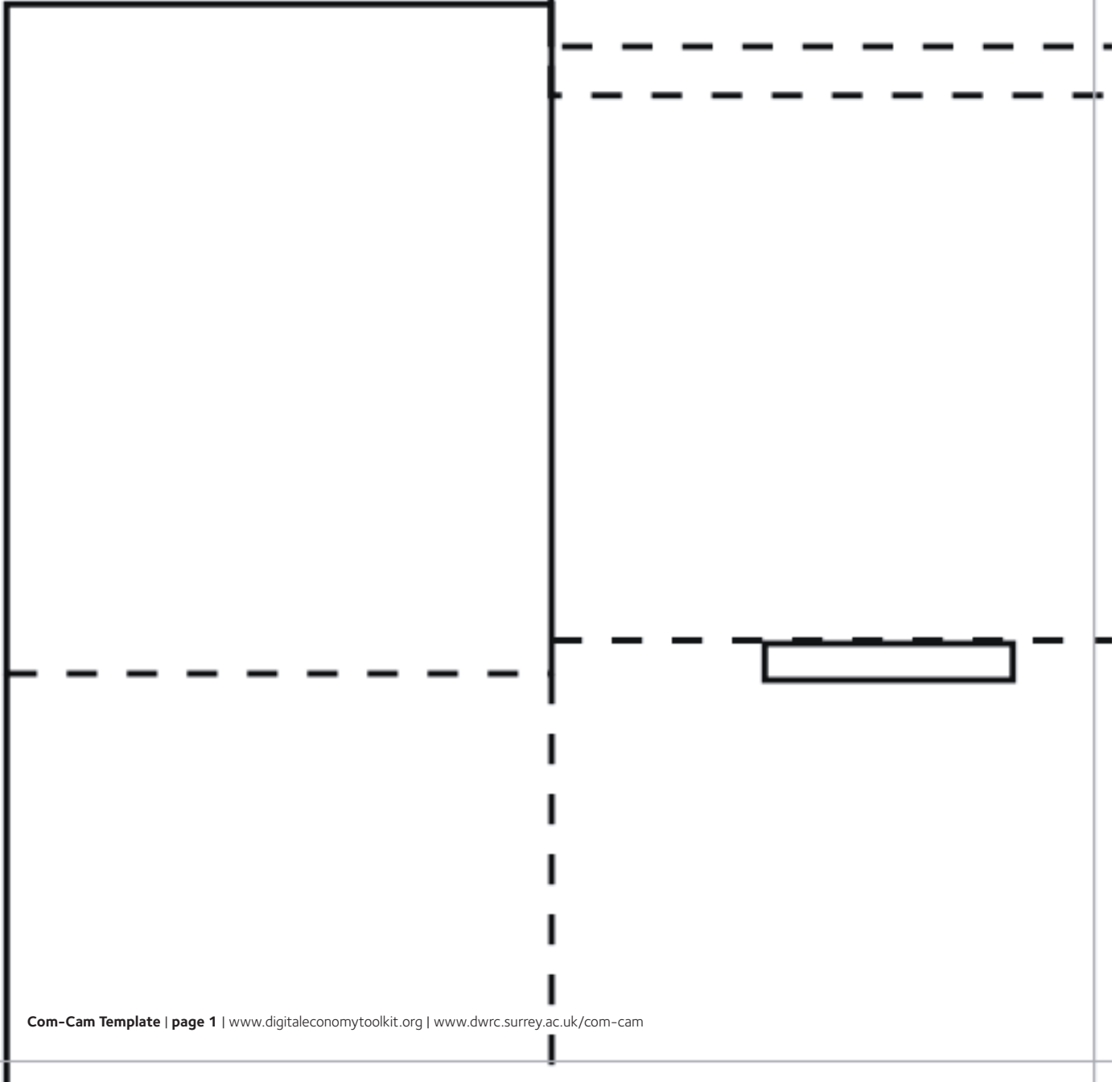


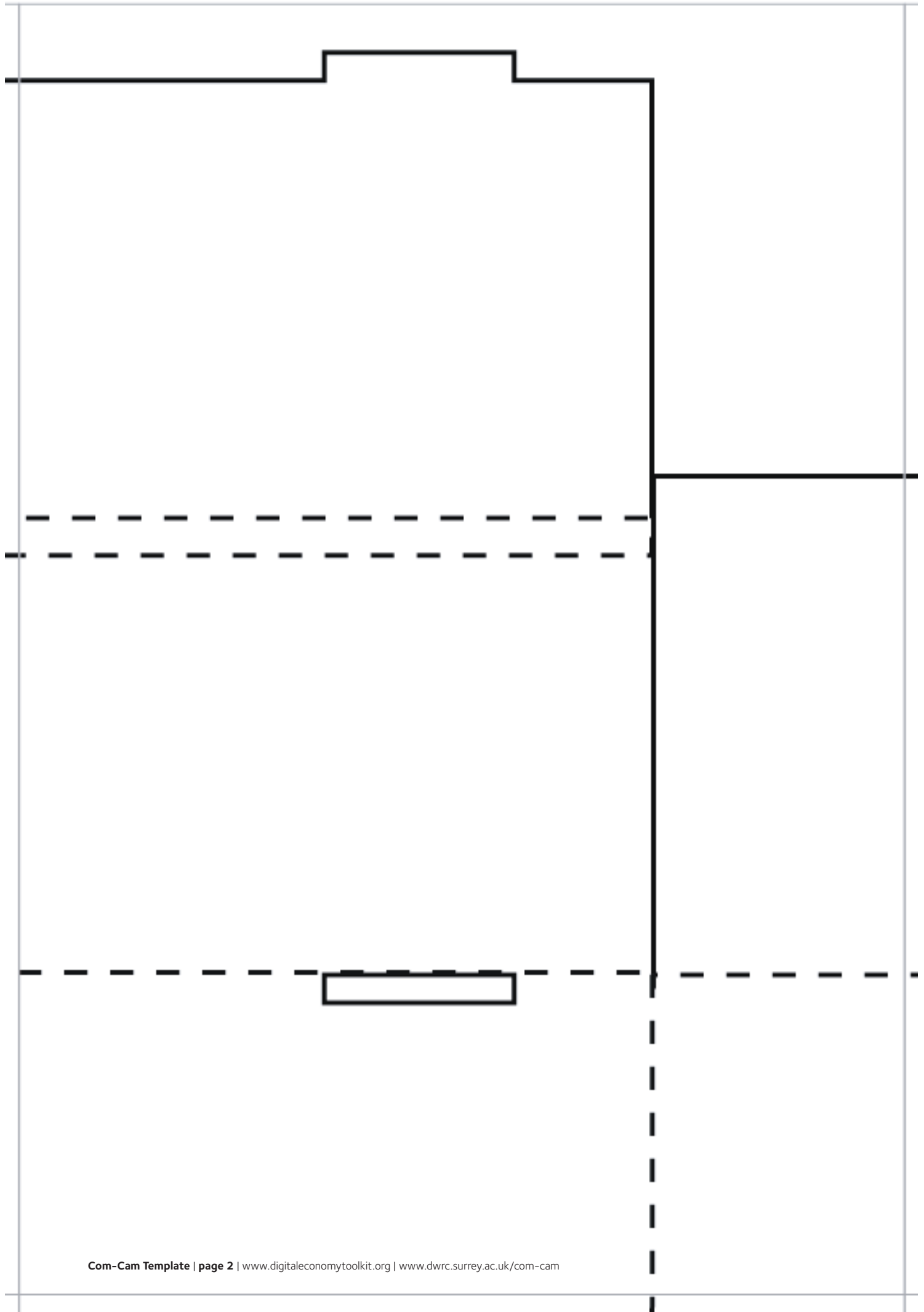
com@cam

For more information and updates:
www.digitaleconomytoolkit.org | www.dwrc.surrey.ac.uk/com-cam



box template





Developed by:

The Digital World Research Centre, University of Surrey, UK

<http://www.dwrc.surrey.ac.uk/com-cam.shtml>

the Automatic Research Group, University College Falmouth, UK

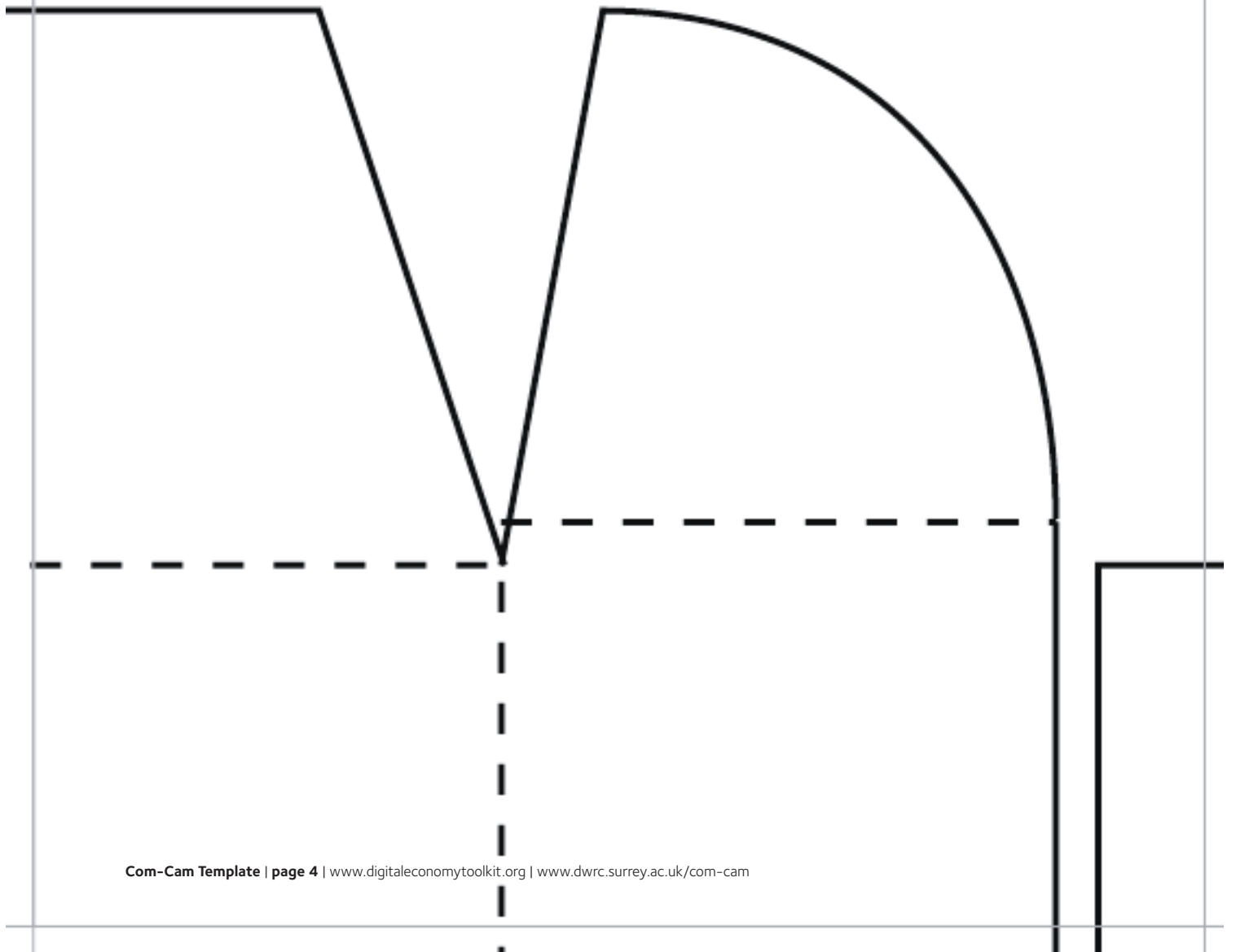
<http://air.falmouth.ac.uk/research-groups/automatic>



CC-BY Attribution 3 License

This license lets you distribute, remix, tweak, and build upon our work, even commercially, as long as you credit us for the original creation.

see <http://creativecommons.org/licenses/by/3.0/legalcode>



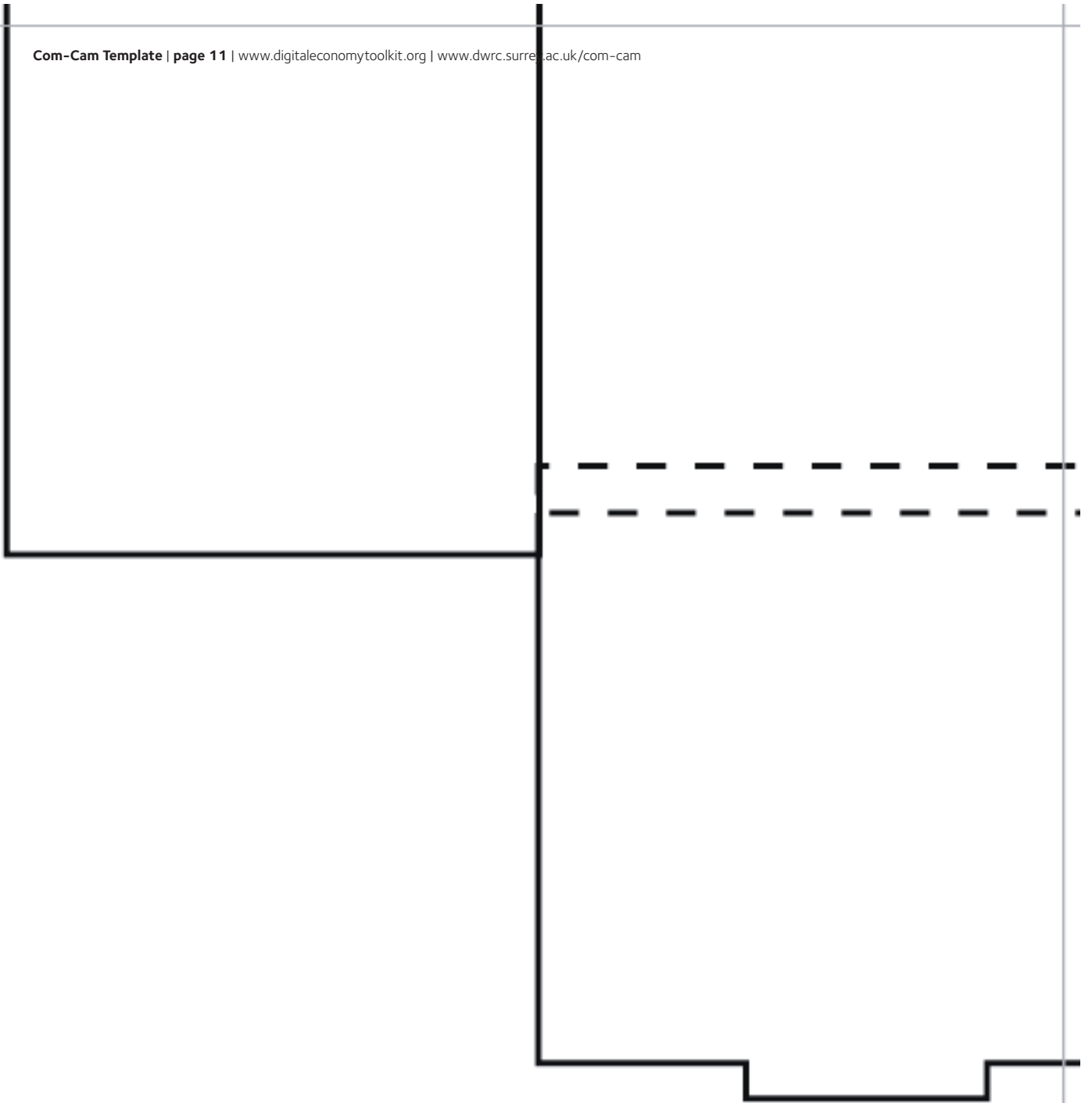


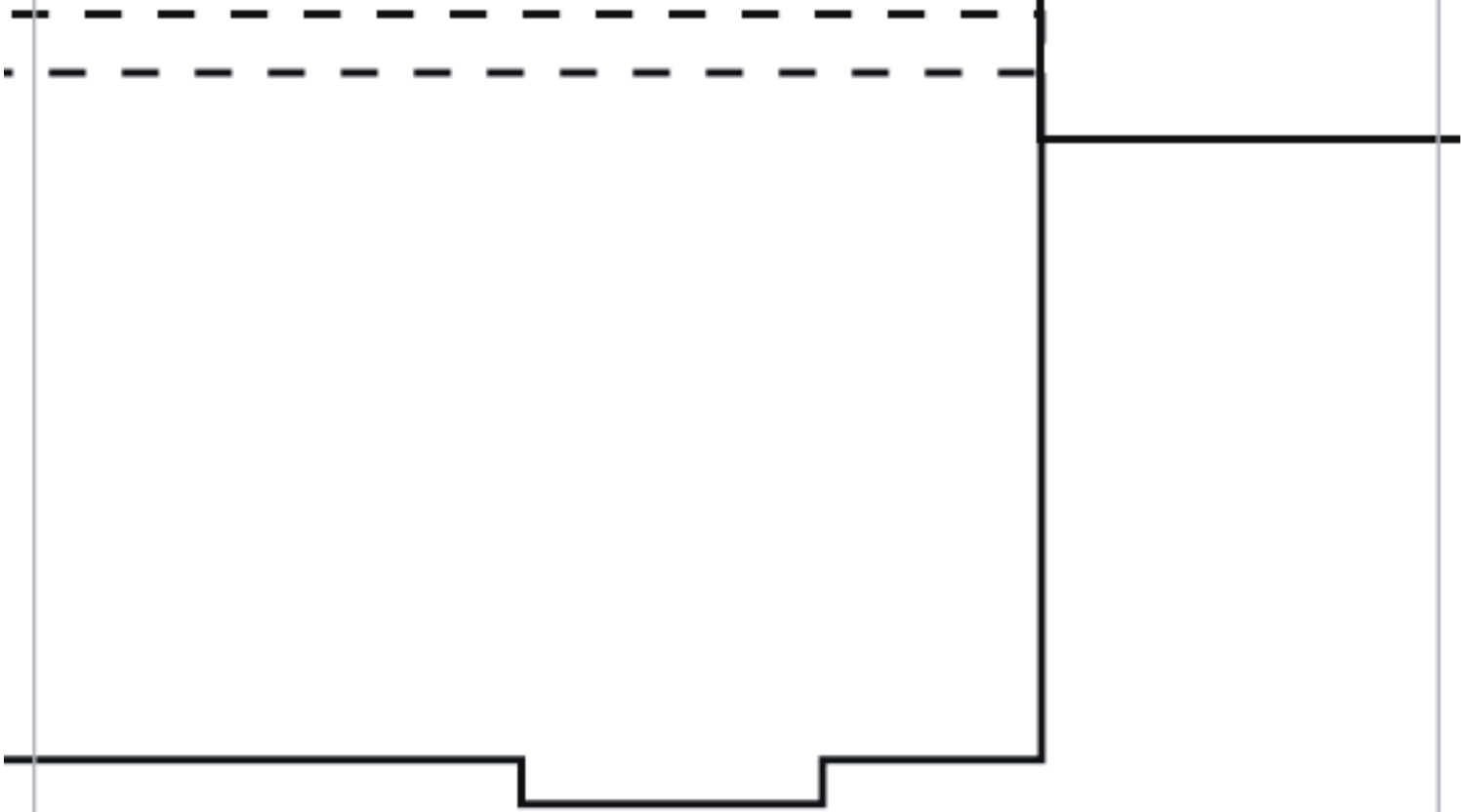
com®cam

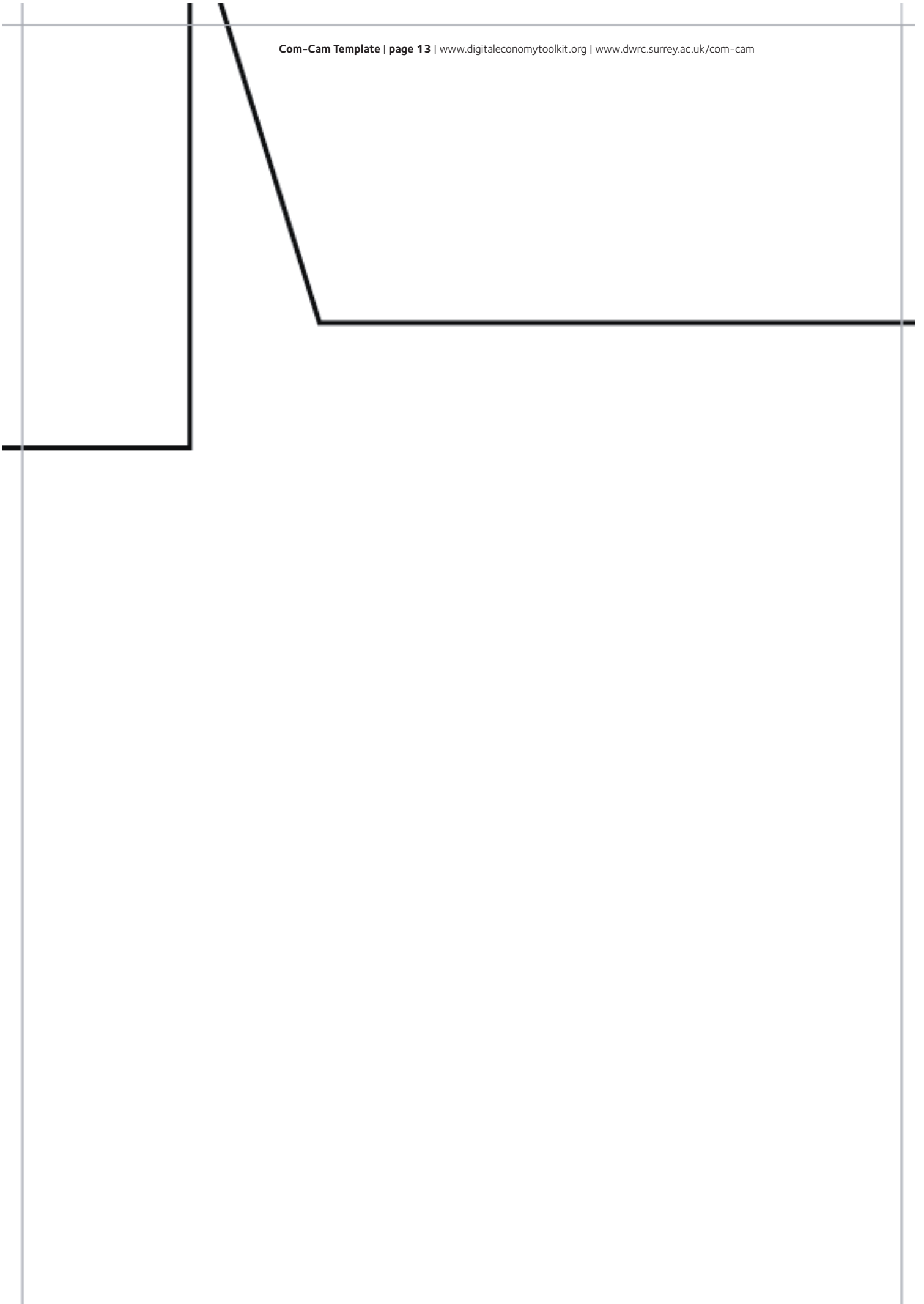


6mm Ø drill hole
15mm Ø 3mm deep
countersink hole on reverse

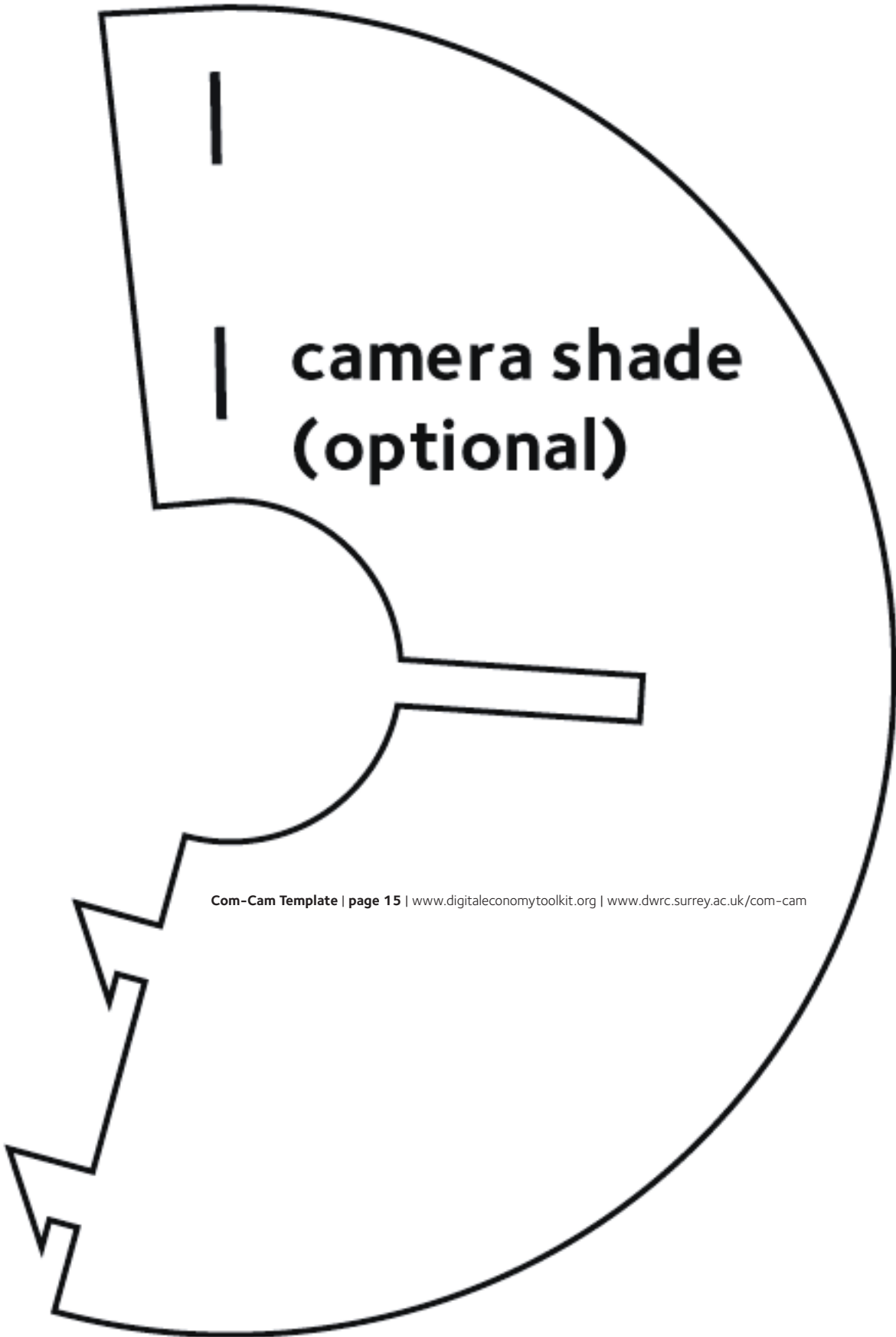
wooden base plate (6mm)











**camera shade
(optional)**